

# Parking- such street sorrow ?

State of the art research at the top secret Rover Advanced Technology Centre at the University of Warwick has produced an insight into the manoeuvre that puts fear into the hearts of thousands and dents in the bumpers of hundreds.

The 'Reverse Parallel Park' manoeuvre, which is almost as cumbersome to say as it is to carry out, is part of the UK Department of Transport test and the IAM Advanced Test, but guidance on its execution has until now been fairly sparse.

The advice presented here seems to work with most vehicles for gaps down to about 1½ car lengths long.

## STEP 1

Stop your car about 0.75m (30 inches) away parallel to the front parked vehicle.

The rear of your car should be ahead of the rear of the adjacent car by no more than 0.75m (30 inches).



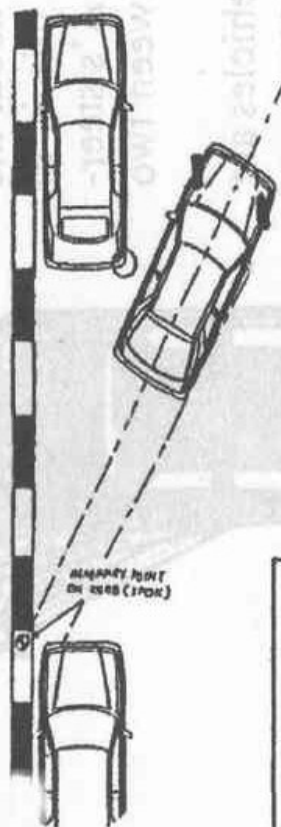
## STEP 2

Start to reverse very slowly and immediately put on full left lock.

Note: while reversing, pay particular attention to the rear right corner of the adjacent car (circled) as you may be quite close.

Continue to reverse with full left lock until either:

- the centre line of your car points at the imaginary point on the kerb (see diagram) or,
- the offside edge of your car points at the nearside headlight of the rear parked car.



## STEP 4

Put on full right lock and reverse until the car is parallel to the kerb.



## STEP 3

Straighten the wheels and continue to reverse until the rear offside corner of your car is in line with the offside line of the parked cars.

(Your front nearside corner should now be close to the car in front).

